

**Jeopardy**

Household Waste	Earth Day 101	3 Rs	The Bay	Learn All About It
<u>10</u>	<u>10</u>	<u>10</u>	<u>10</u>	<u>10</u>
<u>20</u>	<u>20</u>	<u>20</u>	<u>20</u>	<u>20</u>
<u>30</u>	<u>30</u>	<u>30</u>	<u>30</u>	<u>30</u>
<u>40</u>	<u>40</u>	<u>40</u>	<u>40</u>	<u>40</u>
<u>50</u>	<u>50</u>	<u>50</u>	<u>50</u>	<u>50</u>

## Question 1 - 10

What percent of food is never eaten when it is ready to harvest?



What is  
40 to  
50%



## Question 1 - 20

How much trash does an average American dispose each day?

Answer 1 – 20



What is 5 lbs.



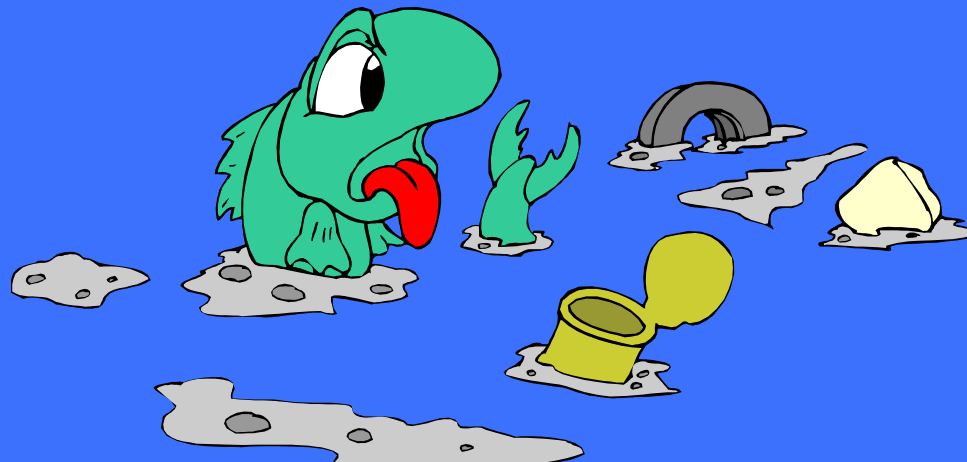
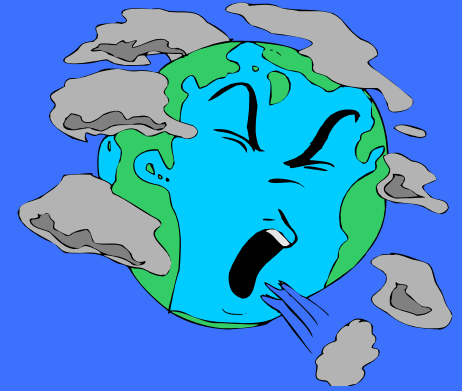
## Question 1 - 30

How many pounds of trash  
is dumped into the ocean  
every year?



Answer 1 – 30

What is 14 billion  
lbs.



# Question 1 - 40

What is nature's recycling?

(Hint think food waste!)

Answer 1 – 40

What is composting.



# Question 1 - 50

How many tons of waste is kept out of landfills every year thanks to recycling?



Answer 1 – 50

What is 57 million tons.



## Question 2 - 10

The location of the 2013  
Severna Park Earth Day  
Festival.

Answer 2 – 10

What is Severna Park  
Middle School?



## Question 2 - 20

Name a group or activity at  
the Earth Day  
Festival from SPMS.

# Answer 2 – 20

- SGA – rain barrel sales
- Youth Rise Leo – water bottle sales
- Environmental Science Club – info display & plants
- Black Saga – Life on the Chesapeake and the Underground Railroad
- Girl Scout Troop – recycle t-shirt bags
- NJHS – info display
- Art – water bottle flowers



## Question 2 - 30

Something you will find at  
the Earth Day Festival  
every year  
(a display, activity, etc.)

# Answer 2 – 30

- Something for everyone! So much to see and do!
- All Severna Park schools – it's a cluster event!
- Gardening, recycle bins, composting tools, information, puppies and goats



## Question 2 - 40

The number of years the  
Greater Severna Park Earth  
Day Festival has taken  
place.

Answer 2 – 40

This year will be the  
10<sup>th</sup> festival!



## Question 2 - 50

The name of the group – a local environmental organization – that sponsors & coordinates the festival.

Answer 2 – 50

What is W.A.G.

Watershed Action Group



## Question 3 - 10

Name the 3 Rs of the  
“green” program

Answer 3 – 10

Reduce

Re-use

Recycle

Bonus: Why this order?



## Question 3 - 20

The number of times an aluminum can can be recycled.

# Answer 3 – 20

## What is INFINITE?

- Making new aluminum cans from used cans takes 95 percent less energy and 20 recycled cans can be made with the energy needed to produce one can using virgin ore.
- Recycling one aluminum can saves enough energy to keep a 100-watt bulb burning for almost four hours or run your television for three hours.
- Tossing away an aluminum can wastes as much energy as pouring out half of that can's volume of gasoline.
- The average employee consumes 2.5 beverages a day while at work.



## Question 3 - 30

**In the lifetime of the average American, the number of times his or her adult weight will be thrown away in garbage?**

- a) 150 times
- b) 300 times
- c) 600 times

Answer 3 – 30

# What is 600 times!

The average adult will leave behind as much as 100,000 pounds of trash during his or her lifetime because we throw away 600 times our adult weight in garbage.



## Question 3 - 40

The number of plastic water bottles used EVERY SECOND in the United States.

# Answer 3 – 40

# 1500

- Out of the 50 billion bottles of water being bought each year, 80% end up in a landfill, even though recycling programs exist.
- 17 million barrels of oil are used in producing bottled water each year.



Question 3 - 50

Paper or Plastic?

# Answer 3 – 50

## Neither, of course.

Bring your own reusable bags to the store. It takes about 12 million barrels of oil annually to meet the demand for petroleum-based plastic bags. And paper bags take four times as much energy to produce as their plastic counterparts ...and generate air pollution as well. In today's society we use over 500 billion plastic bags annually or approximately 1 million per minute.



## Question 4 - 10

True or False:

The Chesapeake Bay is the largest and most valuable estuary in the US.

Answer 4 – 10

TRUE

Length of 200 miles, covers watershed area of 64,000 sq miles, more blue crabs than anywhere else, employs about 15,000 watermen.



## Question 4 - 20

A symbol of hope for the Bay's restoration because of its comeback after being nearly eradicated by pesticides in the 1970s.

Answer 4 – 20

# What is the Osprey?



## Question 4 - 30

Of the 6 states that comprise the Chesapeake Bay Watershed, which is NOT one of them?

- a) New York
- b) Delaware
- c) New Jersey
- d) West Virginia
- e) Pennsylvania

Answer 4 – 30

c) New Jersey

MD, NY, VA, WVA, PA, DE and  
Washington DC

NJ is in Atlantic Watershed



## Question 4 - 40

The Bay got it's name from:

- a) Native American word meaning “Great Shellfish Bay”
- b) Native American Word meaning “Peak Bay”
- c) Spanish word meaning “Beautiful Scenery”

Answer 4 – 40

a) Native American word for  
“Great Shellfish Bay”

Bonus: what tribe?



## Question 4 - 50

The number of people who live in the Chesapeake Bay Watershed:

- a) 15 million
- b) 1 million
- c) 750,000
- d) 120 million

# Answer 4 – 50

a) 15 million



Everyone plays apart in keeping it healthy. Just think if EACH person put 1 piece of trash in the Bay; that's 15 MILLION pieces of trash!



## Question 5 - 10

AACPS resource for outdoor  
and environmental learning.

Answer 5 – 10

What is Arlington Echo?



## Question 5 - 20

These 2 teams are planning outdoor lessons and a planting activity to address storm water management at SPMS.

Answer 5 – 20



## Question 5 - 30

A “green” lesson, program or activity already in place at SPMS.

Hint: MANY possible answers

Answer 5 – 30

TOO MANY TO LIST



## Question 5 - 40

Maryland is the first state to  
create this graduation  
requirement.

Answer 5 – 40

# What is Environmental Literacy?



## Question 5 - 50

An outdoor “green” lesson  
you plan on doing or want  
to do?

Hint: MANY possible  
answers

Answer 5 – 50

YOU NAME IT!

